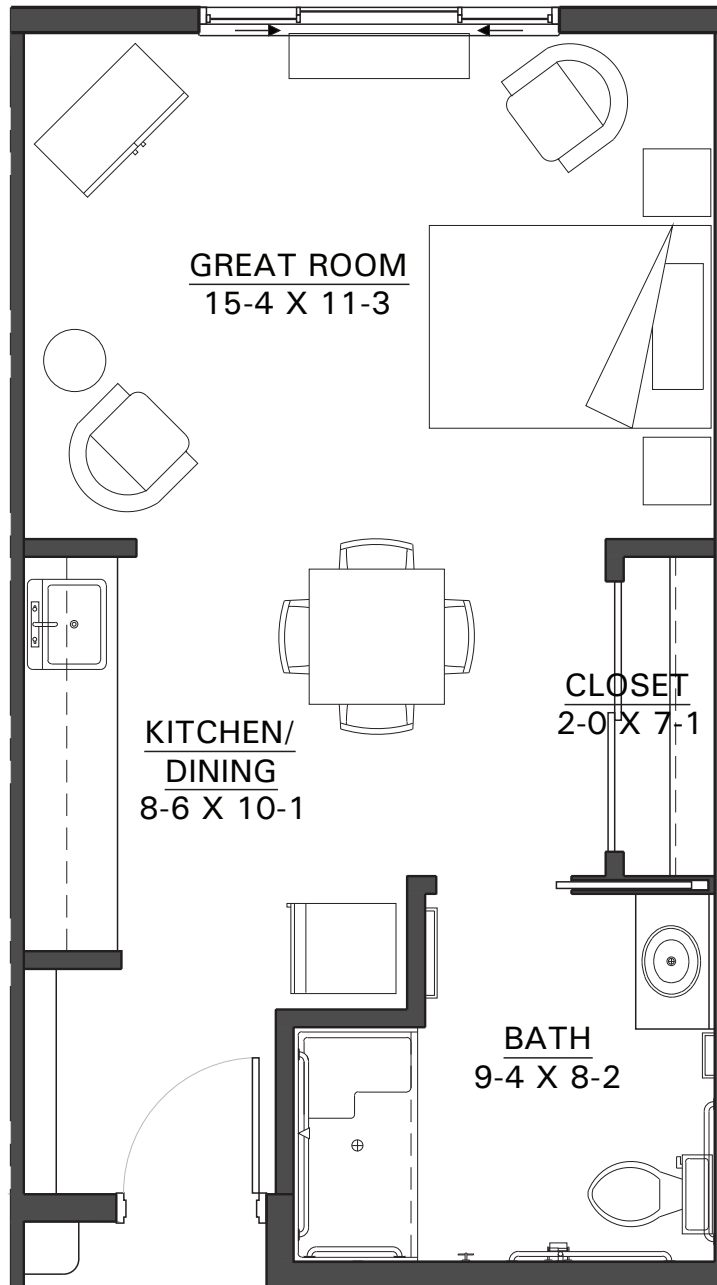


SAVAGE
SENIOR LIVING
at Fen Pointe

SENIOR LIVING
ASSISTED LIVING
MEMORY CARE
ENHANCED CARE

952.808.8725



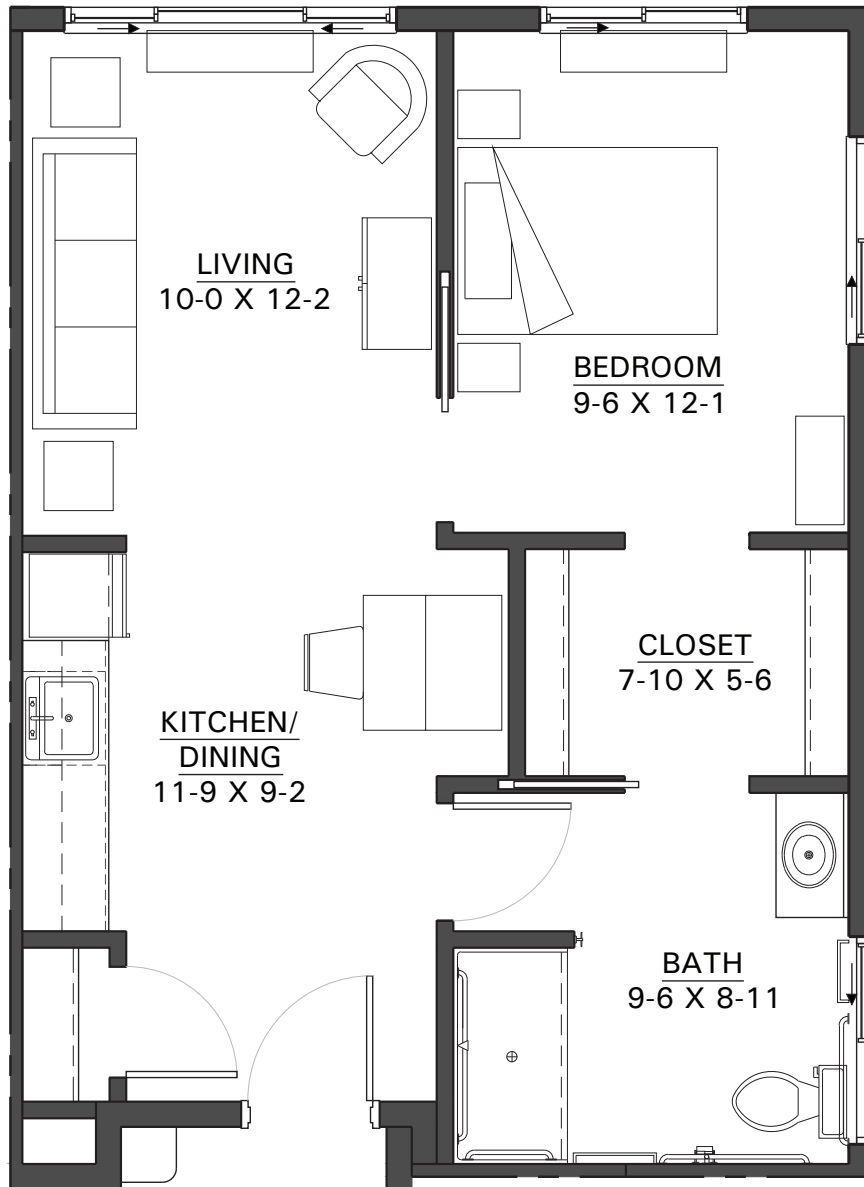


SAVAGE
SENIOR LIVING
at Fen Pointe

SENIOR LIVING
ASSISTED LIVING
MEMORY CARE
ENHANCED CARE

952.808.8725





SAVAGE
SENIOR LIVING
at Fen Pointe

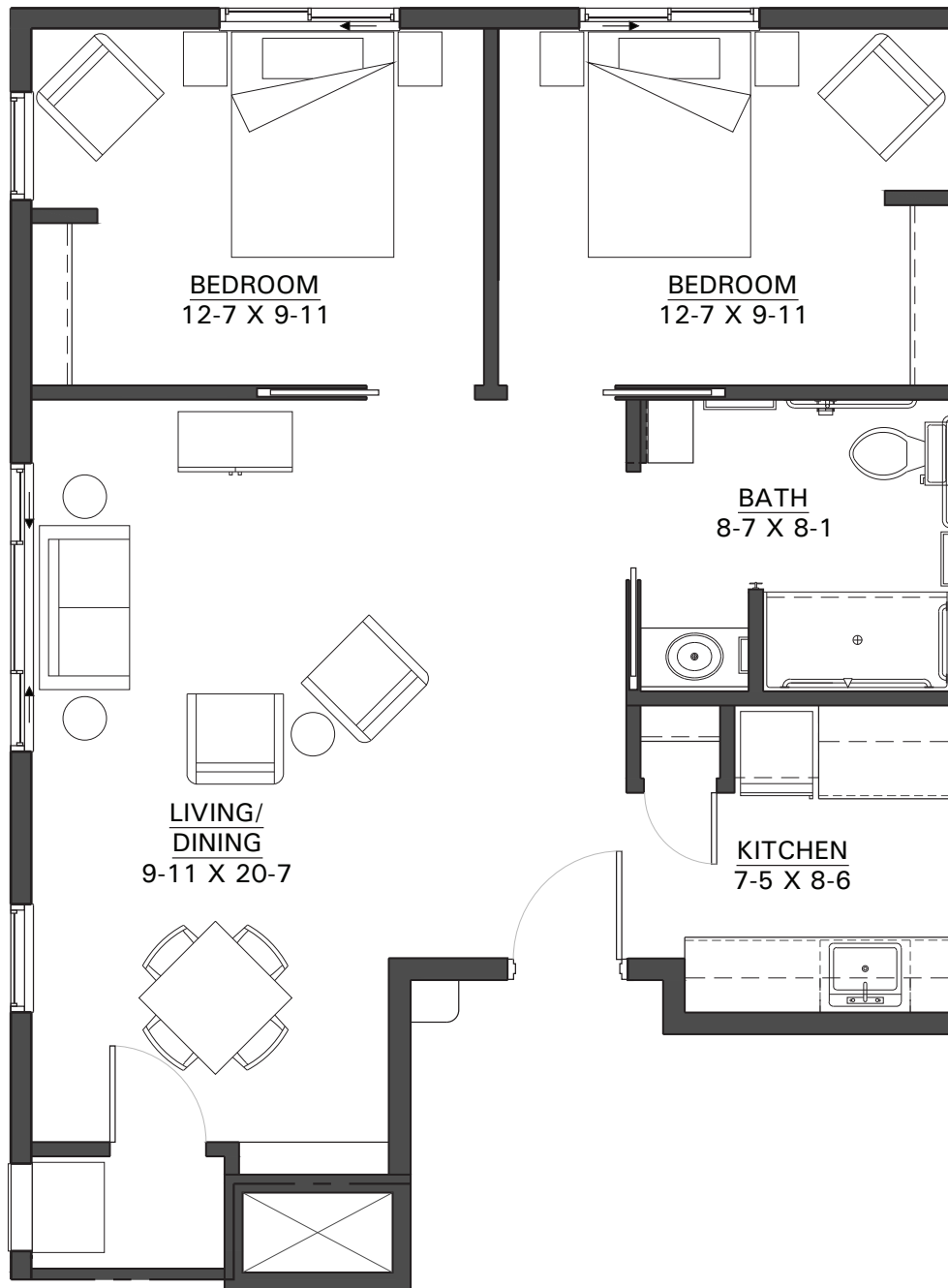
SENIOR LIVING
ASSISTED LIVING
MEMORY CARE
ENHANCED CARE

952.808.8725



Knob Hill Two-Bedroom Memory Care - 806 sq. ft.

Apartment #10



SAVAGE
SENIOR LIVING
at Fen Pointe

SENIOR LIVING
ASSISTED LIVING
MEMORY CARE
ENHANCED CARE

952.808.8725

